

 smith&nephew

RENASYS[®]

Negative Pressure Wound
Therapy

Patient Home Care Information



Introduction

This patient handbook will provide you with important information regarding the Smith & Nephew RENASYS® GO and RENASYS EZ Plus Negative Pressure Wound Therapy (NPWT) Systems. The handbook will be helpful in answering basic questions about the therapy. It is most useful if kept in a safe place with other healthcare documents. For specific instructions on operation of these devices please visit www.myrenasys.com:



- Information on when to use the RENASYS GO and RENASYS EZ Plus systems.
- Contraindications or when not to use the product.
- Warnings and precautions for safe and effective use of RENASYS GO and RENASYS EZ Plus.

What is NPWT?

The RENASYS GO or RENASYS EZ Plus is a therapy device that is applied to your wound, which draws out excess fluid and protects it from outside contaminants to ultimately help promote healing. It is now being widely used in both hospitals and the home.

Your nurse _____

Nurse contact number _____

Your doctor _____

Home health agency _____

Other useful numbers _____

Distributor information _____

How does it work?

RENASYS[®] NPWT systems consists of a therapy device, a canister with tubing, and a wound dressing kit.

The dressing is applied to the wound bed and covered with a clear film dressing and attached to the therapy device using the tubing and canister. The therapy device then draws excess fluid from the wound into the canister while the clear film helps to prevent bacteria from entering the dressing. It may also improve blood flow to the wound via the vacuum which will help it to heal.

The therapy devices are electrical and can be plugged in at the wall, and also can be operated by battery.

How many hours a day do you need to use the therapy?

To get the full benefit of the therapy, we recommend that you stay on it at all times as prescribed by your physician.



How long will it take to improve your wound?

The length of time that the therapy takes to improve a wound is different for every patient. It will depend on your general condition, the size and type of wound that you have, and the treatment you have been prescribed. In many cases, an improvement in the wound can be seen when the first dressing is changed, but in some cases, it may take several weeks. The therapy may be used to close the wound completely, or may be stopped sooner than this, and replaced with a different type of dressing. If your wound shows no improvement, the therapy might be stopped. Your nurse or doctor will discuss when, and why, it will be stopped when they assess your wound at each dressing change.

Will it be painful?

The first time the therapy device is turned on, you may feel a slight pulling or drawing sensation, but it is not usually painful.

If you experience any pain, please speak to your nurse or doctor for advice. They may recommend changing the settings on your device or may prescribe pain-relief medication.

What will the dressings look like when the therapy is working?

The dressings will shrink when the therapy is working, and the film dressing will look wrinkled and will be firm to the touch.

How often will the dressings have to be changed?

The gauze dressings will usually need to be changed 2–3 times a week, but in some cases, it may be more often than this. This will depend on the size, type, drainage amount and position of your wound. Your nurse or doctor will determine how often your dressings should be changed

If you are using a foam dressing, these will need to be changed every 48 hours.

Will the dressing changes hurt?

Some people may experience slight discomfort during dressing changes, specifically during cleaning of the wound, depending on the type and position of the wound. If you feel any discomfort, please tell the person who is changing your dressing. This way, they will be able to give you advice and, if necessary, pain-relief medication, to help ease the discomfort.

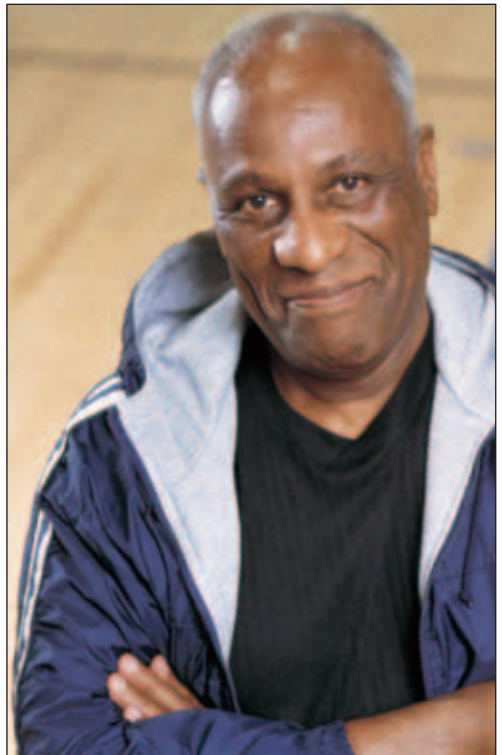
Can you move around while on the therapy?

Usually, patients using the therapy can move around, but this will depend on the position of the wound, the rest of your treatment, and recommendations provided by your nurse or doctor. If you are able to move around, the therapy device can be unplugged and operate on the battery back-up for up to 20 hours on RENASYS[®] GO or up to 40 hours on RENASYS EZ Plus.

Showering and washing

To avoid water coming into contact with electricity, you must disconnect the dressing from the therapy device before showering or washing. You will need to reconnect to the therapy device as soon as you have finished showering or washing. Connect the tube back to the canister and turn the device on following the instructions available online at www.myrenasys.com.

The clear dressing on top of the wound is water resistant. You can shower or wash with dressings in place, as long as you take care not to soak them.



Position of therapy device, while therapy is being delivered:

The therapy device should be level with the dressing/wound site or slightly higher.

How do I know if the RENASYS[◇] therapy device is working?

While the RENASYS GO therapy device is turned on a green light will illuminate. The illuminated light located at the top of the device tells you the device is on and vacuum is working. If the device is set to CONTINUOUS mode (recommended) the selected pressure is displayed on the screen. If the device is set to INTERMITTENT mode, the gauge will show 0 pressure during “off time” and the set pressure while vacuum is occurring.

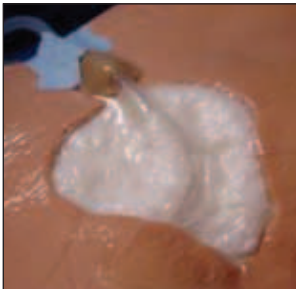
While RENASYS EZ Plus is turned on you will hear the device running and the set pressure will show on the gauge.

It is important to monitor the activity of the device while you are using the therapy.

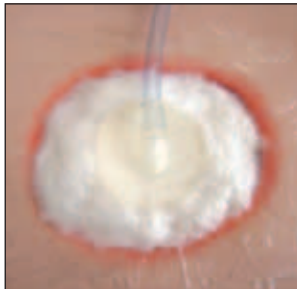
- Make sure the plastic clamp on the drain tube is open.



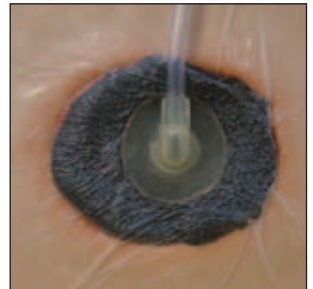
- Does the dressing have a raisin-like appearance?



Gauze with drain



Gauze with port



Foam

What happens if the RENASYS[◇] therapy device alarms?

Both RENASYS GO and RENASYS EZ Plus have audible and visual alarms, which make it easy to see what the problem is. Most problems are easily solved, for example:

- “Low Battery” – The device will begin to alert you when the battery life is getting low. Solve by plugging electrical cord into power outlet as soon as possible.
- “Low Vacuum” – The pressure may be low due to a leak in the dressing, tubing or canister, which can be resolved by the caregiver. Check the seal in and around your dressing, or make sure the canister is connected to the device correctly.
- “Over Vacuum” – If the vacuum pressure is too high and the device cannot self correct, the RENASYS devices will alarm and power off automatically.
- “Blockage/Canister Full” – If there is a blockage or kink in the tubing or the canister is full, the audible alarm will sound. The canister should be changed or the tubing blockage removed.
- “Leak or High Flow” – If there is a leak at the wound dressing site or between the wound and the device, the alarm will sound. Check the dressing seal or the tubing connection.

Visit www.myrenasys.com for more details on safety alarms.

Call your nurse or doctor immediately if:

- You notice a big change in the color or amount of the fluid in the canister, for example if it changes from clear to cloudy or bright red.
- You see the canister fill rapidly with blood.
- Your wound looks more red than usual or has a foul smell.
- The skin around your wound looks reddened or irritated.
- The dressing feels or appears loose.
- You experience pain.
- The alarm will not turn off.

If you have any other questions, please speak to your nurse or doctor.

Purpose of the device (Indications for use)

RENASYS[®] NPWT is indicated for patients who would benefit from a suction device (negative pressure) to help promote wound healing by removing fluids including irrigation and body fluids, wound fluids and infectious materials.

When the device should not be used (Contraindications)

RENASYS NPWT should not be used if you have:

- Necrotic tissue with eschar
- Untreated osteomyelitis
- Malignancy in wound (with exception of palliative care to enhance quality of life)
- Exposed arteries, veins, organs or nerves
- Non-enteric and unexplored fistulas
- Anastomotic sites

Warnings

1. If you see sudden or increased bleeding, immediately discontinue therapy, take appropriate measures to stop bleeding and contact your nurse or doctor.
2. If you suffer from difficult hemostasis or are receiving anticoagulant medicine, you may have an increased risk of bleeding. During use of NPWT, avoid using hemostatic products that may increase the risk of bleeding, if disrupted.
3. Sharp edges or bone fragments in a wound must be covered or removed prior to using NPWT due to risk of puncturing organs or blood vessels while under negative pressure.
4. NPWT should not be used on exposed blood vessels, organs or nerves.
5. If you require defibrillation, the device should be disconnected from the wound dressing prior to defibrillation. The wound dressing should be removed if the location will interfere with defibrillation.
6. RENASYS[®] NPWT devices are not MRI or CT compatible. Do not bring the devices into the MRI suite or scanner range.
7. When operating, transporting, or disposing of the RENASYS NPWT devices and accessories, there is a small risk of contaminated liquids being inhaled or contaminating the device. Be careful when you use the device and remove a full canister.
8. RENASYS NPWT devices have not been studied on children. Your doctor should consider your size and weight when prescribing this device.
9. RENASYS NPWT devices should not be used in areas where there is danger of explosion or around flammable gases (such as oxygen or nitrous oxide).
10. RENASYS EZ Plus is not suitable for use in areas where there is danger of explosion (e.g. hyperbaric oxygen unit).

Precautions

1. Precautions should be taken if you are or may be:
 - Receiving anticoagulant therapy, actively bleeding or have weakened blood vessels or organs.
 - Suffering from difficult wound hemostasis.
 - Untreated for malnutrition.
 - Noncompliant or combative.
 - Your wound is near blood vessels or delicate tissue
2. Your wound should be checked regularly for signs of infection. If your wound is infected, your dressing may need to be changed more often.
3. RENASYS[®] NPWT should remain ON in the CONSTANT mode during use. If you need to disconnect from the device, for example to shower, press the clamp closed and cap off the ends of the tubing. Your nurse or doctor should tell you how long you can be disconnected from the NPWT device. It will be based on your individual wound, such as the amount of drainage, location of the wound, and your risk of infection.
4. If the RENASYS NPWT device has been at temperatures below freezing, let the device return to room temperature before use to prevent damage.
5. Be sure the tubing is connected correctly and does not kink to avoid leaks or blockages.
6. Position the device and tubing so you don't trip or lie on the tubing.
7. Disconnect the device before bathing or showering.
8. If any liquids go into the device, stop using and return to your authorized provider for service.
9. The RENASYS NPWT treatment should never be painful. If you are uncomfortable, tell your nurse or doctor so they can consider reducing the pressure.
10. Do not connect tubing to or cover the open end of the T-connector that is inserted in the canister tubing.
11. RENASYS NPWT should only be used with Smith & Nephew components.

12. The RENASYS[®] NPWT device and wound site should be regularly monitored during therapy to maintain your comfort and therapeutic treatment.
13. Underlying structures, such as bone and tendon, must be covered by the non-adherent dressing layer.
14. Close the dressing clamp before turning off the device. Make sure the device is turned on before opening the dressing clamp.
15. RENASYS EZ Plus or RENASYS GO is only to be used with Smith & Nephew authorized components.
16. The RENASYS EZ Plus device is to be used only with the Smith & Nephew 800cc/ml S-Canister kit (p/n 66800423) or the 250cc/ml S-Canister kit (p/n 66800058).

For more detailed information on RENASYS[®] EZ Plus
and RENASYS GO please visit www.myrenasys.com

Wound Management

Smith & Nephew, Inc.

970 Lake Carillon Drive
Suite 110
St. Petersburg, FL 33716
USA

2250 Alfred-Nobel Blvd.
Suite 300
St-Laurent, Quebec
H4S 2C9
Canada

www.smith-nephew.com
www.myrenasys.com

Customer Care Center
1-800-876-1261
T 727-392-1261
F 727-392-6914

Customer Action Center
T 1-800-463-7439
F 1-800-671-9140

Rx only